

Soft57x



Configuration software for LID57x handheld reader

DATE: January, 2009



Copyrights:

DORSET IDENTIFICATION B.V.

Weverij 26

7122 MS Aalten

The Netherlands

Tel. +31 543 477119

Fax +31 543 475355

Email : id@dorset.nu

www: <http://www.dorset.nu/>

The LID571, LID572 and LID575 complies with FCC Rule Part 15

Operation is subject to the following two conditions:

- 1) this device may not cause interference and
- 2) this device must accept any interference, including interference that may cause undesired operation of the device

Contents:

Introduction.....	4
General.....	4
Installing the software.....	4
Quick links.....	4
The readers.....	5
LID571/LID572 pocket readers.....	5
LID575 MID range readers.....	5
Display.....	6
Button.....	6
Cable connector.....	6
Battery compartment LID571/572.....	6
Battery compartment LID575.....	6
Reader settings.....	7
Reset Reader.....	7
Reload page.....	7
Reading settings.....	8
Readlist.....	8
List lock.....	8
General settings.....	8
Settings during read.....	8
Settings after read.....	9
Communication mode shutdown delay.....	10
Memory settings.....	10
History codes.....	10
Custom codes.....	11
Memory analyzer.....	13
Software settings.....	14
Communication settings.....	15
Comport settings.....	15
Action on receive ID.....	15
Tables.....	16
Tables list.....	16
New table / alter table wizzard.....	17
Delete selected table(s).....	26
Open table.....	26
Security settings.....	30
Authorisation levels.....	30
Old password.....	30
New password.....	30
Verify password.....	30
Apply changes.....	30
Registration.....	31
Registration form.....	31
Mailing the file.....	32
Entering the received information.....	32
Expansion slot.....	33
Select a module.....	34
Driver information.....	34
Expansion slot tools.....	34
Wedge function.....	35
Prefix, interfix and suffix.....	37

Data.....	38
Auto increment tool	39
Auto increment tool example.....	39
Import TXT into Excel.....	41
Response tool	41

Introduction

General

Soft57x is developed for the LID570, LID571, LID572 and LID575 handheld reader. With this software program you can easily configure the handheld reader to your demands. You have the ability to create your own database-table to manage and edit data. It also has a very flexible import/export function which allows you to generate output files that suit your wishes. But it also means that you are no longer tied to a specified file layout for importing data.

This manual contains a description of the PC software. A step by step explanation is given. Throughout this manual an example will be used for further clarification.

Installing the software

Soft57x is a free Windows™ 98/ME/2000/XP based PC software on CD-ROM or download from our website : www.dorset.nu

Installing this software is done as follows:

1. Insert the CD-ROM in your CD-ROM device. The CD will start automatically. If not, run RUNHTML.EXE from the CD.
2. Select 'Install LID57x PC software Windows 98/NT/2000/XP'
3. Follow the instructions on your screen.

After the software has been installed an icon is created in the PROGRAMS folder of the START menu.

Quick links

Quick links to:

Reader settings

- [The reader](#)
- [Reading settings](#)
- [General settings](#)
- [Reader memory settings](#)

Description of the hardware.
 Edit the list of transponders that should be read.
 Set the general reader settings.
 Set the settings for the reader's memory.

Software settings

- [Software communication settings](#)
- [Databases](#)
- [Software Security settings](#)
- [\(Re\)Registration](#)

All the settings for the connection with your reader.
 Add/Edit/Delete (custom)tables.
 Set/Change passwords.
 How to get your FREE registration code.

Expansion slot

- [How to select a module](#)

How to select a expansion module (Lid572 only)

Tools

- [Using Wedge function](#)
- [Auto increment tool](#)
- [Response on LCD function](#)

How to setup the wedge function.
 A powerful tool to fill a field with incremental data
 Writes a string out of a table onto the LCD of the reader (LID572 only)

The readers

LID571/LID572 pocket readers



LID575 MID range readers



Display

2x16 characters (7x5 dots) LC display with backlight.

Button

Press the red button if you want to start reading. The reader will read as long as you press the button.

You can access the communication mode by "double clicking" the button. If you want to edit the readlist and you do not want to use a PC for this, you can access the readlist as follows:

LID572 readers and LID571 readers with firmware version 8.03 or higher and 9.03 or higher:

1: Click the button 5 times with a maximum interval of 300 milliseconds, but do not release the button after the fifth time you've pushed it. A long beep will sound and the display will show "COMPORTS ACTIVE".

Continue at step 2

Other firmware versions:

1: Double click the button with a maximum interval of 300 milliseconds, but do not release the button after the second time you've pushed it. The display will show "COMPORTS ACTIVE".

2: Hold down the button for approximately 5 seconds, the display will show "RELEASE BUTTON".

3: Now you have 4 seconds for each transponder to activate it (push the button to add the transponder to the readlist). If you do not push the button within the 4 seconds the transponder type will not be read during normal operation. At the end of the setup the reader will turn off, now the new settings are applied.

Note: for a Lid572, follow the steps for the higher versions.

Cable connector

Lid571:

You can connect your reader to the PC via Infra Red or cable. If you use a cable and you want to be able to read transponders while it is connected, be sure to put the reader into communication mode before clicking "Connect". Otherwise the PC will put the reader into communication mode and it will stay in this mode as long as it is connected to the PC. (**Warning:** only use the special communication cable part no. RS232-LID571)

Lid572

You can connect a Lid572 to the PC via Infra Red or USB. (optional via a internal Bluetooth connection)

Warning: Do not try to connect the reader to the PC using a RS232 cable these cables are only suited for the Lid571 series.

Lid575

You can connect a Lid575 to the PC via USB (optional via a internal Bluetooth connection)

Warning: Do not try to connect the reader to the PC using a RS232 cable these cables are only suited for the LID571 series.

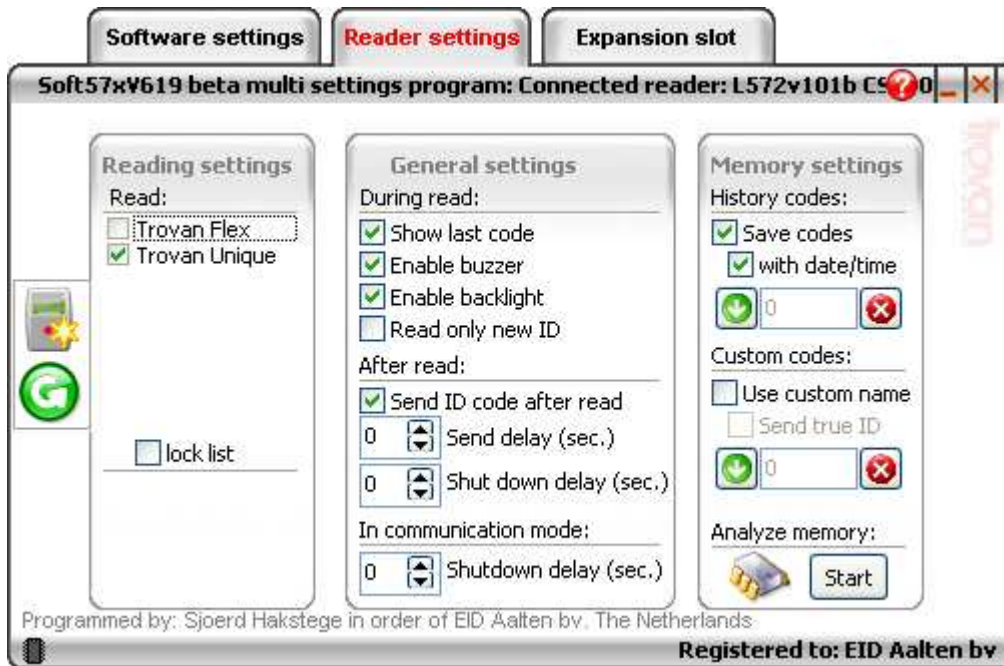
Battery compartment LID571/572

Only use 9V alkaline or rechargeable batteries. Here you will also find the serial number required for the software [registration](#).

Battery compartment LID575


Only use 4x AA alkaline or rechargeable batteries. Here you will also find the serial number required for the software [registration](#).

Reader settings



Click on the items in the screen shot for more specific information on every item.

Reset Reader

When you click the Reset reader button () , the reader will turn to it's default settings. All the saved codes will be lost!

Reload page

When you click the Reload page button () , all the data on this page will be reloaded.

Reading settings



Click on the items in the screen shot for more specific information on the item.

Readlist

Default: Trovan Unique

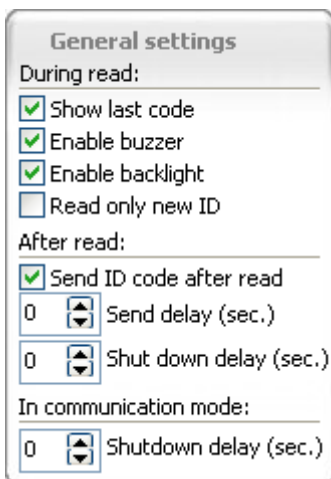
Here you can select which transponders you want to read. It is strongly recommended that you do not select transponders you do not need. This will help to increase the reading speed of the reader.

List lock

Default: Off

This option is only available on the Lid572. If the option is selected, the user cannot access the readlist otherwise than by PC.

General settings



Here you can edit the reader's general settings.

Click on the items in the screen shot for more specific information on every item.

Settings during read

These settings will apply to the reader during read.

Show last code

Default: on

This option is only available on the Lid572. Enable this option if you want the last code to be shown if you press the red button shortly (reader must be turned off first).

Enable buzzer

Default: on

Enable this option if you want to hear a beep after a successful read. During error messages you will ALWAYS hear a beep.

Enable backlight

Default: on

Enable this option if you want to turn on the LCD's backlight during read. The backlight will ALWAYS turn off if you put the reader in communication mode (double-click button).

Read only new ID

Default: off

Enable this option if you want to avoid reading the same tag twice in a row. If you enable this option and you do read a transponder for the second time in a row, the reader will show a message:
SAME TAG>PUSH TO CONTINUE.

Settings after read

These settings will apply to the reader after read.

Send ID

Default: off

Enable this option if you want the reader to send the ID number after it has been read. You have to hold down the button after read during the "[Send delay time](#)".

Send delay

Default: 3 seconds

Here you can set the delay between reading a transponder and sending the information to the PC. If you want to send the ID number, you must hold down the red button after the ID number was read. For example: if you have a send delay of 3 seconds, after read you must hold down the button for 3 seconds. After this time a beep will sound and a confirmation message will appear on the LCD.

If you are using an IR adapter, a delay is preferable so you have some time to aim the reader towards the IR adapter. If you use a cable, the send delay can be set to zero seconds.

Note: the confirmation message that the ID was send will not appear when the send delay is set to zero seconds.

Shutdown delay

Default: 5 seconds

Here you can select the time between the release of the button and the shutdown of the reader. When a tag has been read and you want to be able to write the number on a piece of paper for example, its convenient that the ID code stays on the display for quite a while.

Communication mode shutdown delay

Default: 180 seconds

Here you can select the time where after the reader has to shut down when in communication mode (Display shows COMPORTS ACTIVE). The reader's shutdown timer will be reset if there is communication with the PC. If the reader is connected with a cable and is put into communication mode automatically the reader can not shut down, therefore an alarm beep will sound if the shutdown time has expired. (Beeps every 5 seconds).

Memory settings



Here you can set all the settings that apply to the reader's memory. Click on the items in the screen shot for more specific information on every item.

History codes

These options/settings apply to the history codes.

Save codes

Default: off

Enable this option if you want to store the ID codes in the reader's memory. You can download these saved codes by clicking the ["Download"](#) button

Save codes with date/time


Default: off

Enable this option if you want to store the ID codes with a date/time stamp. When you change this option, all the historical data will be lost!


Number of history records

In this box you can see how many codes are saved in the reader. To download these codes, click on the "[Download](#)" button.

Download history

Click the  button if you want to start downloading the saved codes to your PC. The data transfer window will be opened.

Clear history records

Click the  button if you want to delete the historical data out of the reader's memory.

Custom codes

These options/settings apply to the custom codes.

Use custom codes

Default: off

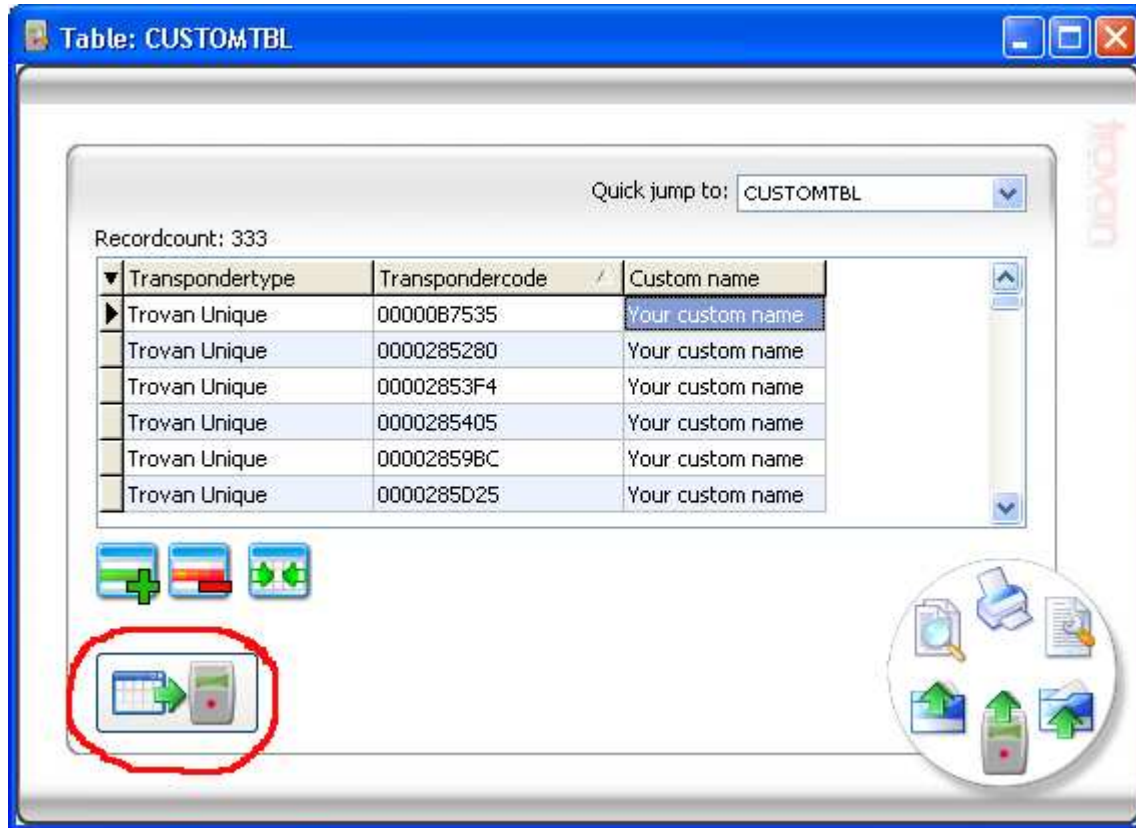
Enable this option if you want the reader to show you custom names instead of the ID numbers. You have to upload the list with custom codes first.

To create a list of custom codes do the following:

Open the CUSTOMTBL from the [tables list](#).

- Fill the list with the transponders you want to create the custom names for. There are two ways to fill the table:
 1. Read all the transponders with the reader ([save option](#) must be enabled), and download them into the HISTORYTBL, then copy them to the CUSTOMTBL using the [copy function](#).
 2. Connect the reader to the PC and establish the connection. Then select the transponder type cell, a button will appear. When you click this button, the reader will automatically start scanning. If this button does not appear, this means that your reader does not support this function. Instead you can read and send the ID code manually. See the "[Settings after read](#)" chapter for more information.
- Change the custom names to your wishes.
- Upload the custom codes list by clicking the red circled button (see picture).

A new feature is that you can use any table as it were a CUSTOMTBL as long as this table contains a "Custom name" field. Such a field can be added to your own table using the [table wizard](#)



Send true ID


Default: off

Enable this option if you want the reader to send the original ID number instead of the custom name.


Number of custom codes

In this box you can see how many custom codes have been saved in the reader. To download these codes, click on the "[Download](#)" button.

Download custom codes

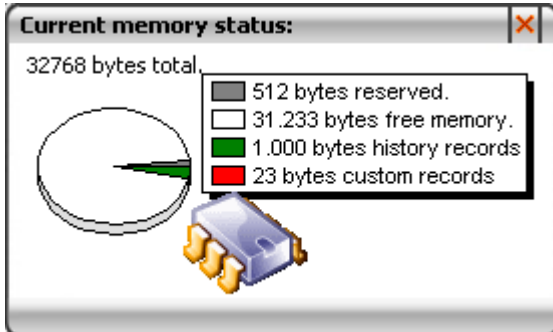
Click the  button if you want to start downloading the custom codes to your PC. This will open the data transfer window.

Clear custom codes

Click the  button if you want to delete the custom codes in the reader's memory. This action will also delete all the historical data!

Memory analyzer

Click the "Start" button if you want to start analyzing the reader's memory. This will open the data transfer window. After all data is downloaded the following window is shown:



Here you can see how many free memory is available. You can also see how many historical data is stored and the number of custom codes.

Close this window by clicking the "X" in the top right of the window.

Software settings

Software settings Reader settings

Soft57xV619 beta

Communication settings

6

Connect

Action on receive ID:

Locate record in

Database(s)

CUSTOMTBL
 HISTORYTBL

Security settings

Authorisation level

level 1
 level 2
 level 3

Old password

New password

Verify password

Apply

FREE Registration

Step1: Fill out the [registration form](#)

Step2: Mail the generated file to:
info@eid-aalten.nl
or print and Fax to:
(+31)(0)543-475355

Step3: Fill in the received information:

Company name

Registration key

Register

Programmed by: Sjoerd Hakstegge in order of EID Aalten bv, The Netherlands

Unregistered: your evaluation period has expired, register first.

Click on the items in the screen shot for more specific information on each item.

Communication settings



Here you can set all the comport and communication settings.
Click on the items in the screen shot for more specific information on every item.

Comport settings

Here you can select the comport to which the reader is connected. Double press the red button so that the display says "COMPORTS ACTIVE", then click "Connect". Once you click "Connect", the program will start searching for the reader. If found, the button will light green. If you want to connect a LID572, simply plug in the USB cable and the software will automatically connect to the correct comport. If more than one LID572 is connected, the readers are shown in a list box. Pick a reader from this list to edit the corresponding settings.

Action on receive ID

Here you can select which action should be taken once a ID number is received (the [send ID after read](#) option has to be enabled).

There are four actions which can be taken:

1. Show on status bar: the received code will be displayed at the bottom left of the screen.
2. Locate record in table: if a table is opened and selected, the program will locate the record in the table.
3. Show popup form: the received code will be shown in a large popup window. The visible time can be selected.
4. Use WEDGE settings: the software has a wedge function. When this option is selected the wedge settings will be applied on the selected application. [Read more about the wedge function.](#)

Tables



Here you can create, open, edit and delete the tables that are available. Click on the items in the screen shot for more specific information on every item.

Tables list

In this list you will find the tables that are available. The tables shown are default tables which cannot be deleted, they are used to download the historical data and the custom names. If you want to delete tables you have to check the checkboxes of the tables you want to delete and click on the ["Delete"](#) button.

New table / alter table wizzard

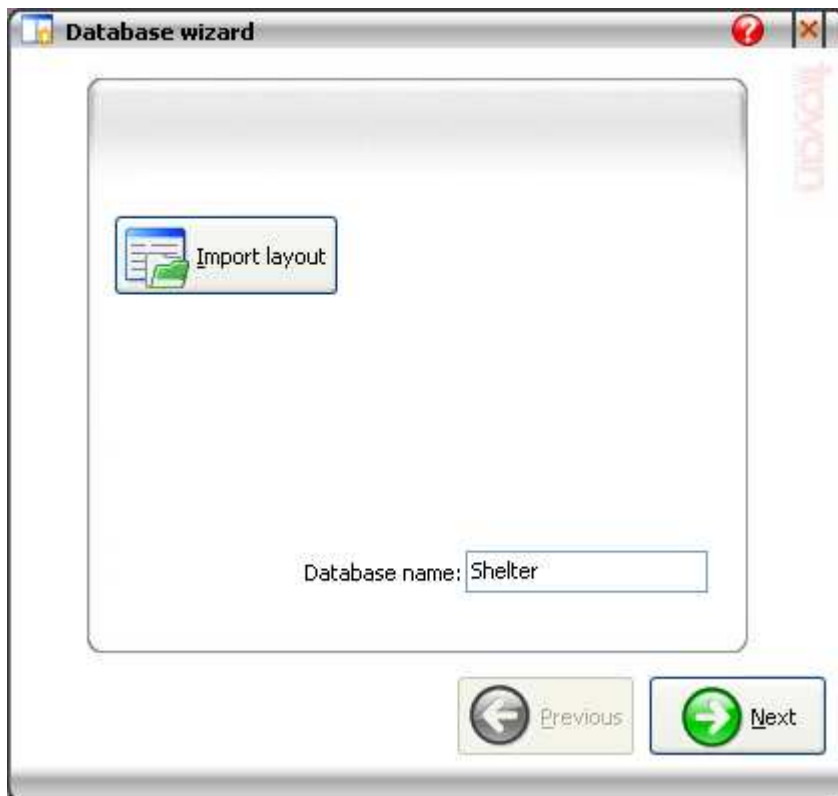
An example will be used to create a table. Lets say you have a animal shelter and you want to create a table with animal specific data.

This table must contain:

- The chip id number of the animal
- The name of the animal
- The address of the animal that can be copied to the reader as a custom code.
- A drop down list with the kind of animals (dog, cat etc.)
- The date when the animal came in
- The date when the animal went out
- The number of days the animal was in the shelter (calculated)
- An extra field to fill in notes like the colour of the animal

To create this table you have to click the "New" button. This will open the [wizzard](#).

Define the table name

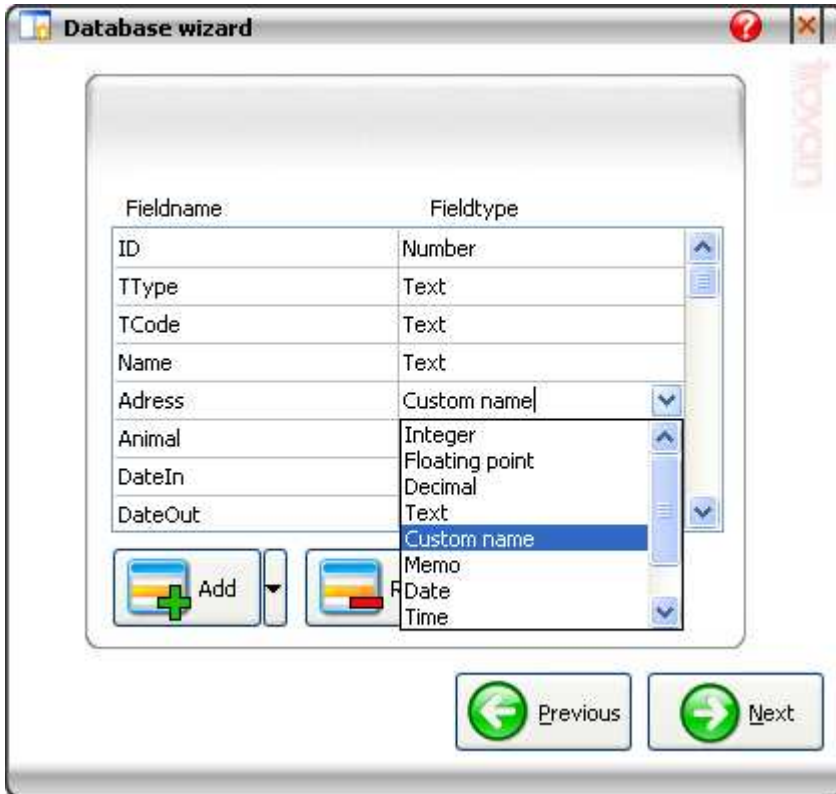


In this window you have to define a unique table name and click ["Next"](#)

If you are creating a new table, you can also import a layout by clicking the "Import layout" button.

if you are altering a table, there will be a "Export layout" button instead of the "Import layout" button.

Define table fields

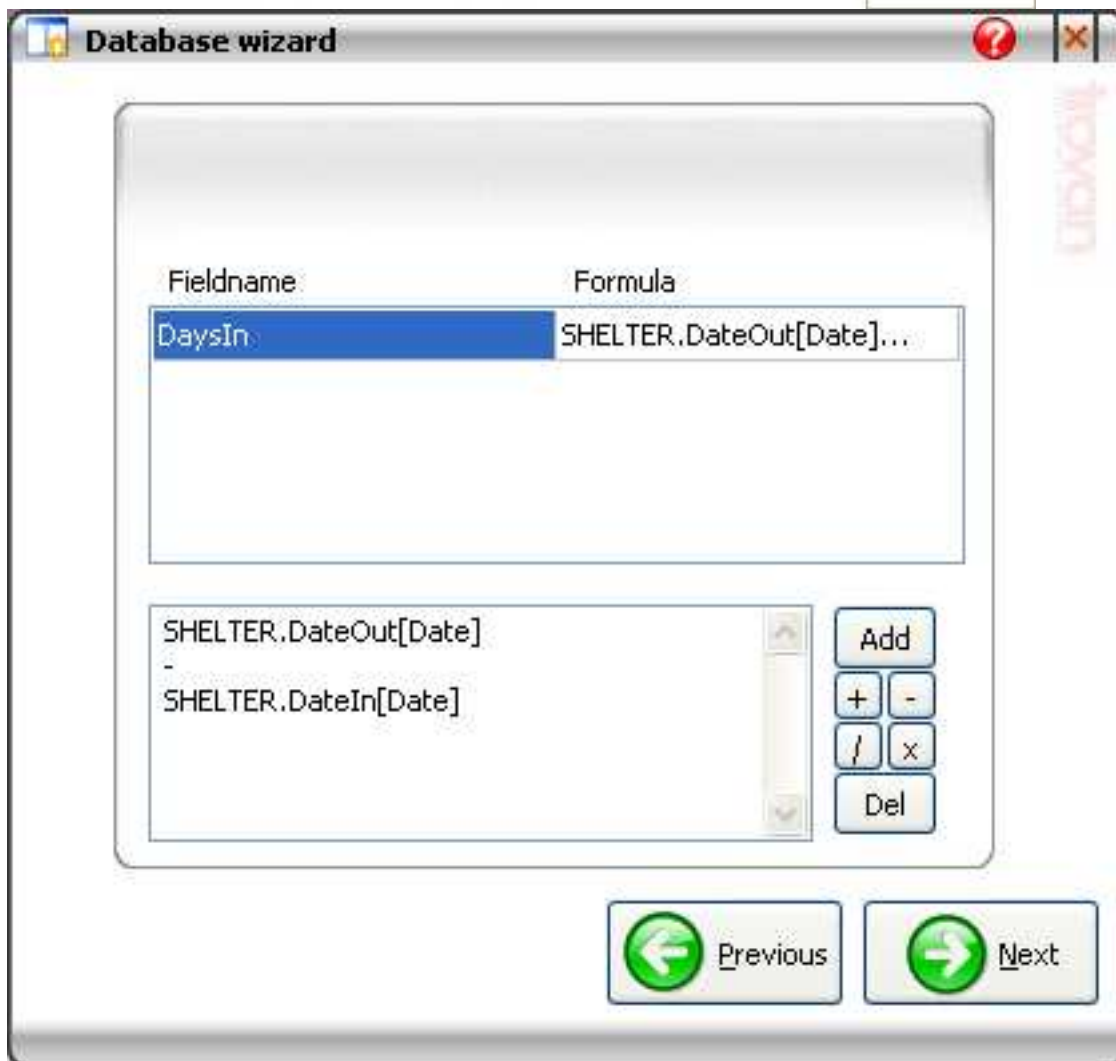
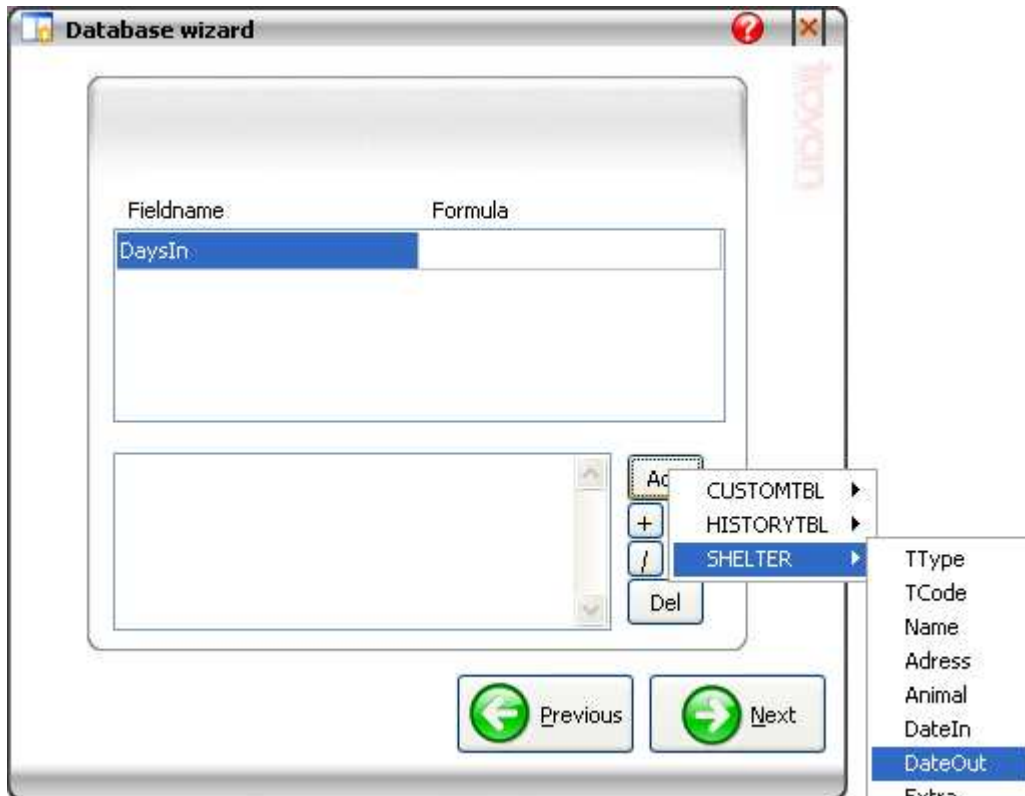


Here you have to define the required fields for your table. The first 3 fields are always required and cannot be deleted. Click "Add" to add a field. Now you have to define the fieldname (which has to be unique) and the fieldtype. You can choose the following field types:

- Integer
- Floating point
- Decimal
- Text (max. 35 characters)
- Custom name (max. 35 characters of which 16 can be displayed in the reader's LCD)
- Memo (you can type more than one line into a memo box)
- Date
- Time
- Auto increment (will increment every time you download the corresponding ID number into the table or locate it)
- Calculated (you can define a formula to calculate the field)

You can also add fields from other tables by clicking the arrow next to the "Add" button. Click ["Next"](#) when you are done or ["Previous"](#) to change the table name.

Define calculated field(s)



Here you have to define the formula(s) for the calculated field(s) . If there are more than 1 calculated fields select the field from the list and enter the formula in the bottom half of the screen.

In our example we only have one calculated field which is the number of days the animal is in the shelter (DaysIn).

There are 4 arithmetic operations (add, subtract, divide and multiply).

Click "Add" to add and select the fields from the table that you want to do the calculation with. Click "Dell" to delete the last line.

In our example we need to subtract the two dates from each other in order to get the number of days.
(DaysIn=DateOut-DateIn).

Click ["Next"](#) when you are done. If you want to edit the fieldnames/types, click ["Previous"](#).

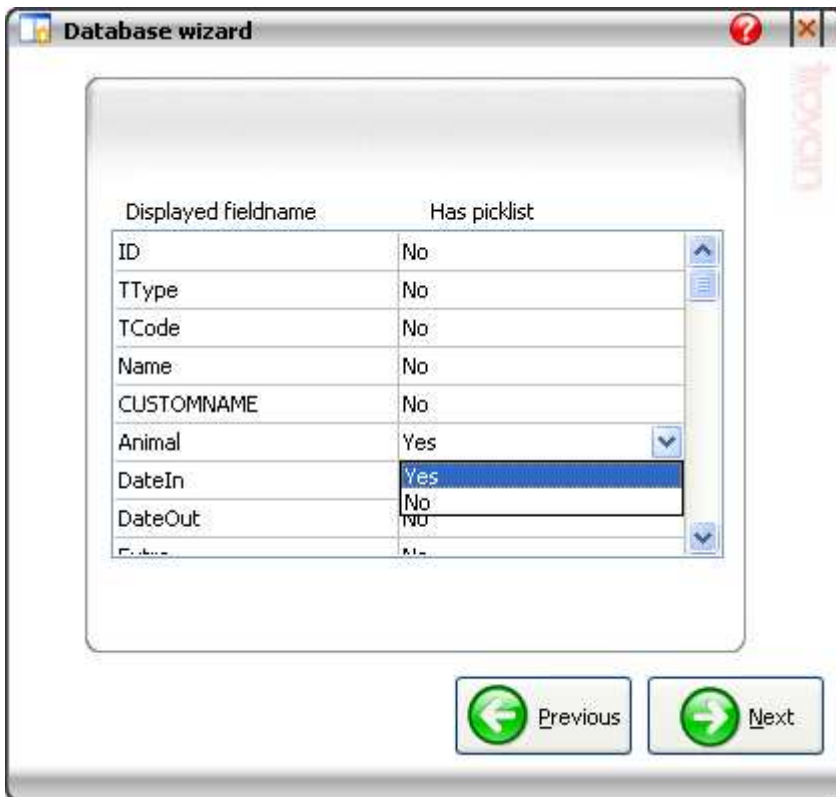
Note: When subtraction two dates, the result will be a date: (mm/dd/yy) $10/05/2005 - 10/02/2005 = 1/03/2000$ So the date 01/01/2000 can be seen as the "zero" date. Momentarily this is the only way to do date subtractions. This may change in the future.

Define displayed labels



In this window you have to define the displayed labels. These labels will be displayed when you open the table. When done, click [Next](#). If you want to edit the fieldnames/types, click [Previous](#).

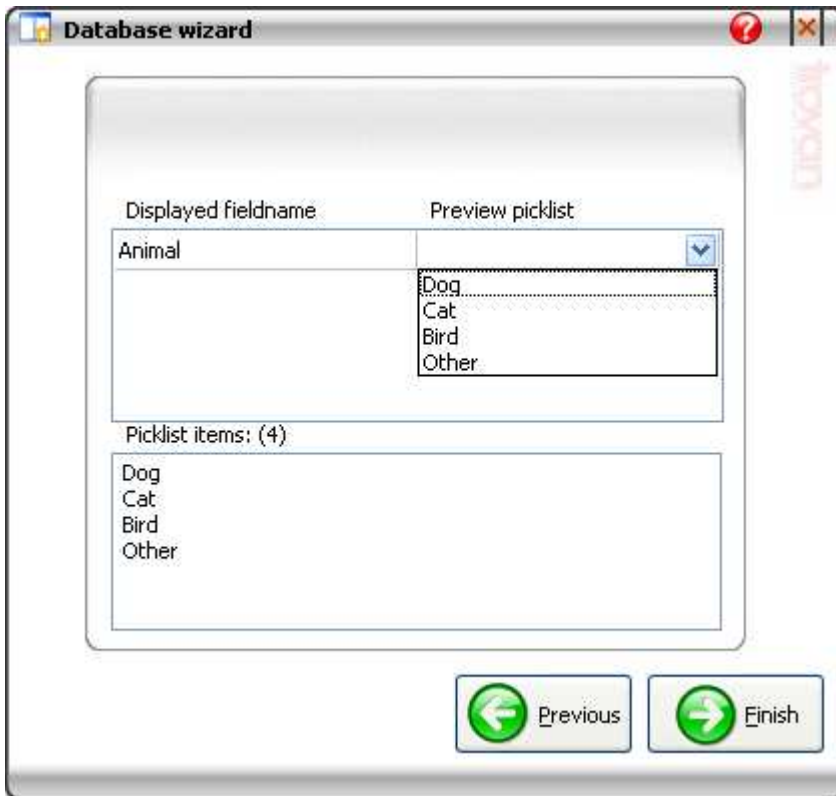
Define the picklist(s)



Here you have to define which fields should get a picklist. A picklist is a predefined list of items, just like the Yes/No list in the picture above. If you want a field to have a picklist, select "Yes". In our example we want a picklist for the kind of animal, so we select yes for Animal and click ["Next"](#).

If you are done click ["Next"](#) to edit the picklist(s). Click ["Previous"](#) to edit the displayed labels.

Edit the picklist(s)



Here you can define what items the picklist(s) should have. If you have more than 1 field that has a picklist then first select the field (upper half of the screen) and then edit it in the lower half of the screen. You can preview the picklist by clicking it in the upper half of the screen.


In our example we want some predefined animal kinds in the list. simply type the items in the lower box and click "Finish".

Our table will be created and displayed in the [Table list](#). If you want to change which fields should get a picklist, click [Previous](#).

Delete selected table(s)

Select the table(s) in the [list](#) that you want to delete and click on the delete button. Now the selected tables will be deleted (CUSTOMTBL and HISTORYTBL not included).

Open table

To open a table you must select it from the tables list and then click the open table button.  The following window will be displayed (depending on the table you open):

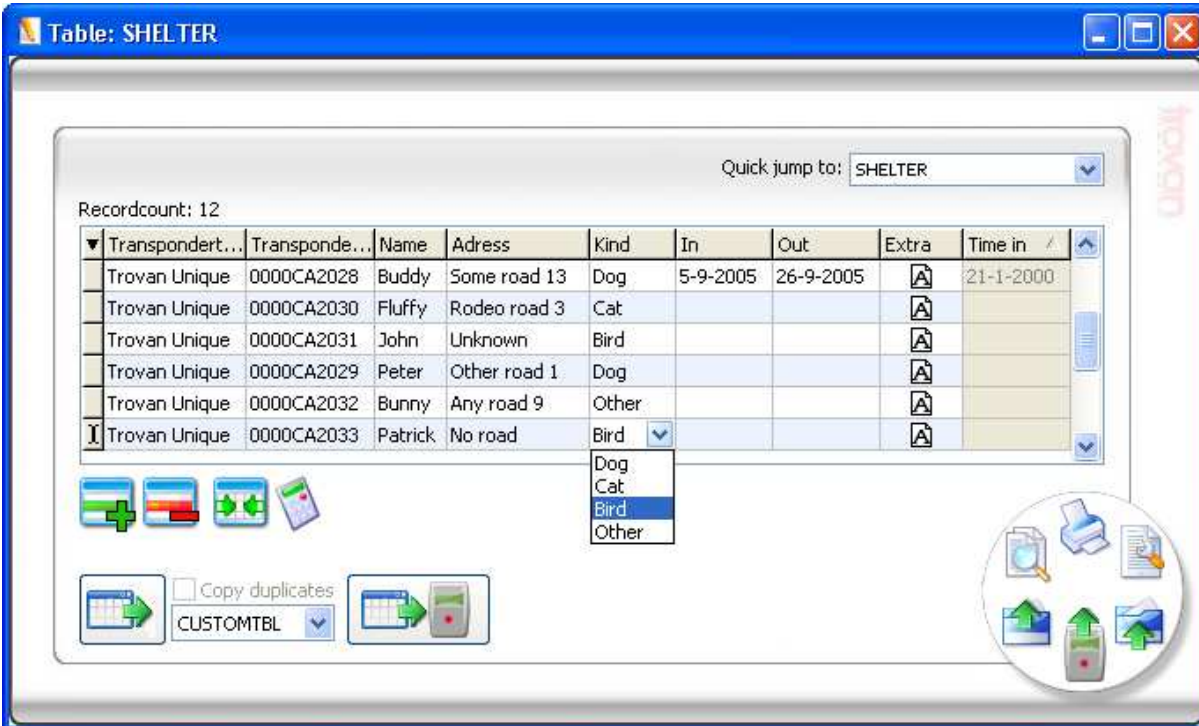


Table: SHELTER

Quick jump to: SHELTER

Recordcount: 12


Transpondert...	Transponde...	Name	Adress	Kind	In	Out	Extra	Time in
Trovan Unique	0000CA2028	Buddy	Some road 13	Dog	5-9-2005	26-9-2005		21-1-2000
Trovan Unique	0000CA2030	Fluffy	Rodeo road 3	Cat				
Trovan Unique	0000CA2031	John	Unknown	Bird				
Trovan Unique	0000CA2029	Peter	Other road 1	Dog				
Trovan Unique	0000CA2032	Bunny	Any road 9	Other				
<input checked="" type="checkbox"/> Trovan Unique	0000CA2033	Patrick	No road	Bird				

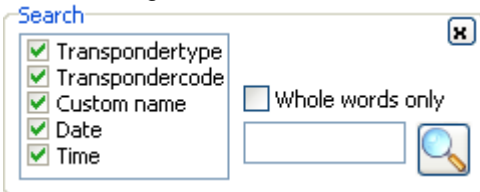
Kind dropdown menu options: Dog, Cat, Bird, Other

Copy duplicates CUSTOMTBL

Click on the items in the screen shot for more specific information on every item.


Search in a table

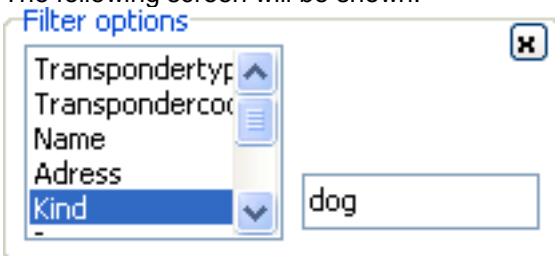
If you want to search in a table you have to click on the magnify glass. 
The following screen will be shown:



To search, select the field(s) you want to search and enter the string to search for. If you want to search for whole words only, be sure to enable the "Whole words only" option. Click on the magnifying glass to start the search. When a match is found the field will be highlighted. Click on the magnifying glass again to search for the next match.

Filter table


If you want to filter a table, you have to click the filter symbol. 
The following screen will be shown:




To start filtering, select the field and enter the string you want to filter on. In our example, if we only want to see all the dogs, we must select the "Kind" field, and type "dog" into the filter box. Now the table is filtered.

Note: You can also search within a filtered table.

Export table

To export data from the opened table click the export symbol. 
A Wizard will be opened. Follow the steps to complete the export procedure.

Import table

To import data from a file into the opened table you have to click the import symbol. 
A Wizard will be opened. Follow the steps to complete the import procedure.


Printing a table




You can print a table by clicking on the printer symbol. The printed document has the same layout as the opened table. This means that if you resize/move or hide a column. It will be applied on the printed document also. When you print a document your company info will be displayed at the top. To edit this information you can open the Companyinfo.inf file which is located in the directory were you installed the software. You can also open the registration form and edit the data there (don't forget to save).

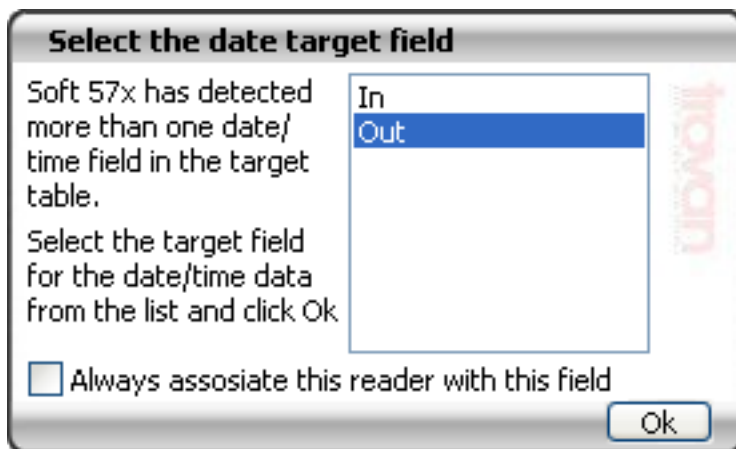
Import data from reader



You can import the data from the reader by clicking the  button. The data from the reader will be added to the table. If you have a time or date field in the table, the date and time data will be downloaded into these fields. If you have more than one date and/or time fields you must chose into which field you want to download the date/time data. In our example of the shelter we have two date fields, so after we have scanned animals that LEFT the shelter and we











want to update the table we must connect the reader to the PC and click the  button. Because we have two date fields, the program will show the following window:

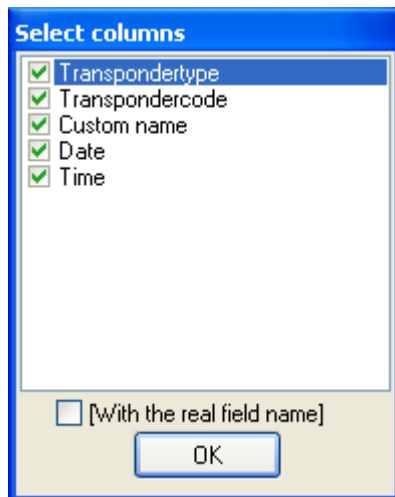


We must chose the "Out" field since the scanned animals LEFT the shelter. If you have separate readers for scanning animals that are coming in and going out of the shelter, you can choose to associate the connected reader (which has a unique ID) with the selected field. Doing so, the next time you hit the "import from reader" button the program will not show this window again.

Special functions

The table has some special functions which are:

-  "Copy function", you can easily copy the transponders to, for example, the custom table. This way you can quickly generate the custom names.
-  "Upload codes to the reader" (only available in tables where a "CUSTOMNAME" field is present), to copy the custom names to the reader.
- Quick jump to:  Quick jump to other tables: you can jump to other tables by selecting a other table from the list
-  Add record (not available in the history table). Add a record to the table by clicking this button.
-  Remove selected (not available in the history table). Remove the selected records by clicking this button.
-  Autosize columns. When clicking this button, the columns will be resized.
-  Calculate fields (not available in tables that do not contain calculated fields). Click this button to recalculate the calculated fields.
-  Column select function, you can hide columns you do not use or do not want to print by clicking this button on the upper left of the table. The following window will be shown:



Select the columns you want to see and click "Ok".

- Auto increment tool, with this function you can easily fill cells with incremental data. See chapter 6 "[Auto increment tool](#)" for more info.

Security settings

You can secure the software by applying a password.
Click on the items in the screen shot for more specific information on every item.

Authorisation levels

There are 3 different authorisation levels which are:

Authorisation level 1: Full access to the reader, including changing the passwords for level 2 and 3.

Authorisation level 2: Changes to the reader's settings are not possible. Resetting the reader is not possible. No changes possible to other authorisation levels.

Authorisation level 3: Same restrictions as level 2 plus: No full memory access, Download only.

Old password

If you want to change an existing password you have to enter the old password in the "Old password" box.

New password

You can enter the new password in the "New password" box. To remove a password leave this box blank.

Verify password

To verify the password you have to re-enter it in the "Verify password" box. To remove a password leave this box blank.

Apply changes

To apply the new password you have to click on the "Apply" button. A message will be shown if the new password is successfully set.

Registration

FREE Registration

Step1: Fill out the [registration form](#)

Step2: Mail the generated file to: info@eid-aalten.nl
or print and fax to: (+31)(0)543-475355

Step3: Fill in the received information:

Company name

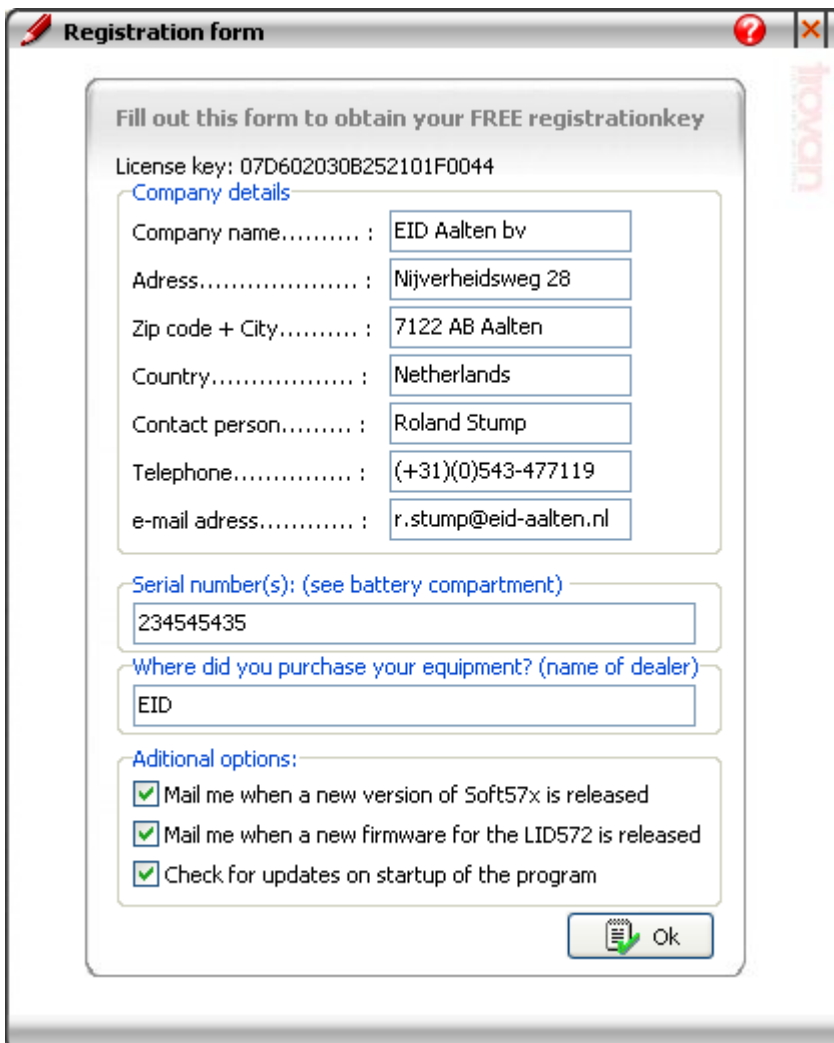
Registration key

 Register

When you first install the software you will notice that it is a 30 day trial version. You can obtain a free registration key by filling out the registration form.

Click on the items in the screen shot for more specific information on every item.

Registration form



Registration form

Fill out this form to obtain your FREE registrationkey

License key: 07D602030B252101F0044

Company details

Company name..... : EID Aalten bv

Adress..... : Nijverheidsweg 28

Zip code + City..... : 7122 AB Aalten

Country..... : Netherlands

Contact person..... : Roland Stump

Telephone..... : (+31)(0)543-477119

e-mail adress..... : r.stump@eid-aalten.nl

Serial number(s): (see battery compartment)

234545435

Where did you purchase your equipment? (name of dealer)


EID

Additional options:

Mail me when a new version of Soft57x is released

Mail me when a new firmware for the LID572 is released

Check for updates on startup of the program

 Ok

You have to fill out this form to obtain your free registration key.

Company details

Enter the company's details. When you print a table, this information will appear on the printed document. See [Print Table](#) for more information.

Serial numbers

Enter the serial number(s) of the reader(s). If you have more than one reader you can specify a serial number range by separating the start and end number with ".." for example 5010501..10 means serial numbers 5010501 through 5010510.

Purchased

Please specify where you purchased the reader(s). When the form is filled out you can save it by clicking "Ok". Now you have to enter the location where the registration file should be saved and click "Save".

Mailinglist

Please specify if you want to receive an e-mail if a new version of the Soft57x software is released or a new firmware for the LID572 is released. Select the "Check for updates on startup of the program" to let Soft57x check for newer versions on startup. (an internet connection must be available)

Mailing the file

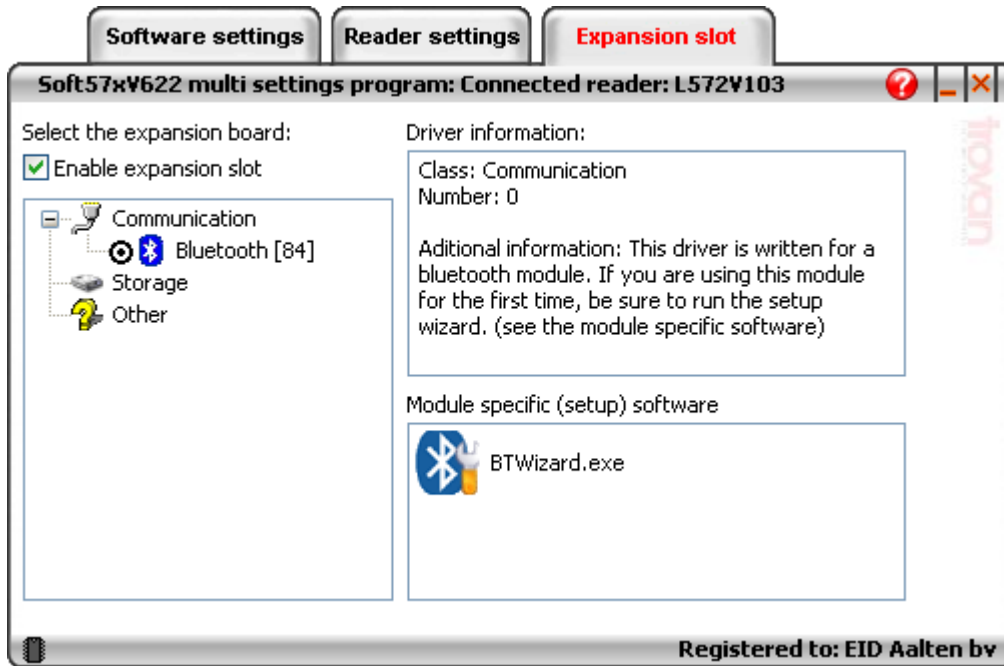
After filling out the [Registration form](#) you have to e-mail this file to: id@dorset.nu or print and fax it to (+31)(0)543 475355
In reply you will receive a registration key.

Entering the received information

When you have received a registration key you have to enter it in the boxes at the bottom of the screen. Please note that the registration key and company name are case-sensitive. When done click "Register".

Expansion slot

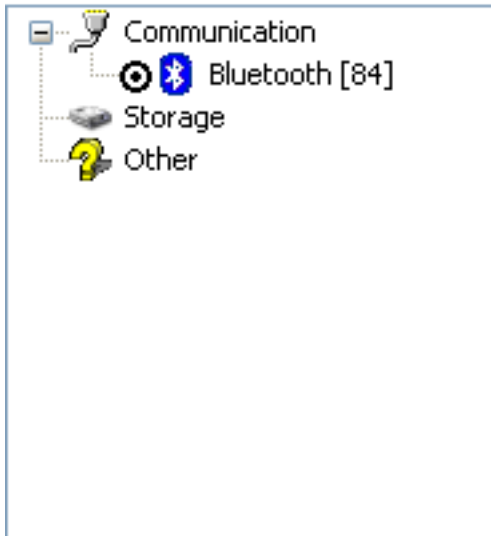
The expansion slot is only available on the Lid572 and only available if the reader is connected to the PC by an USB cable. It is designed to add functionality to the Lid572 depending on the user's demands. The number of supported modules will grow in time. At this moment only one module is supported (a Bluetooth module).



Click on the items in the screen shot for more specific information on each item.

Select a module

Enable expansion slot



Here you can select the module that is mounted inside the Lid572. The modules are divided into three categories:

- Communication
- Storage
- Other

At this time only one module is supported, a Bluetooth module that can be used to communicate with the Lid572. To find out more about the module, click on the label, the information will be shown in the boxes next to the modules list.

To select / enable a module, click on the corresponding radio button.

Driver information

In this box you can find more information about the selected module.

Expansion slot tools

Some modules have one or more tool programs to setup the selected module or to communicate with it.


In this box you will see all the tools that belong to this particular module. To start a tool: double click on the item. (module has to be enabled first)

Wedge function

The embedded wedge function is a powerful tool to wedge ID codes into another program. We will take an example to clarify the wedge function.

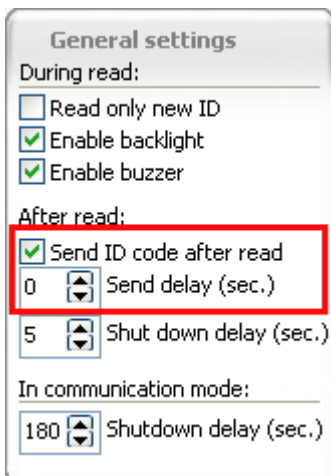
Lets say we want to wedge the ID number into an Microsoft Excel worksheet together with the date and time.


First we need to connect the reader to the PC and establish the [connection](#), then choose "Use Wedge settings" from

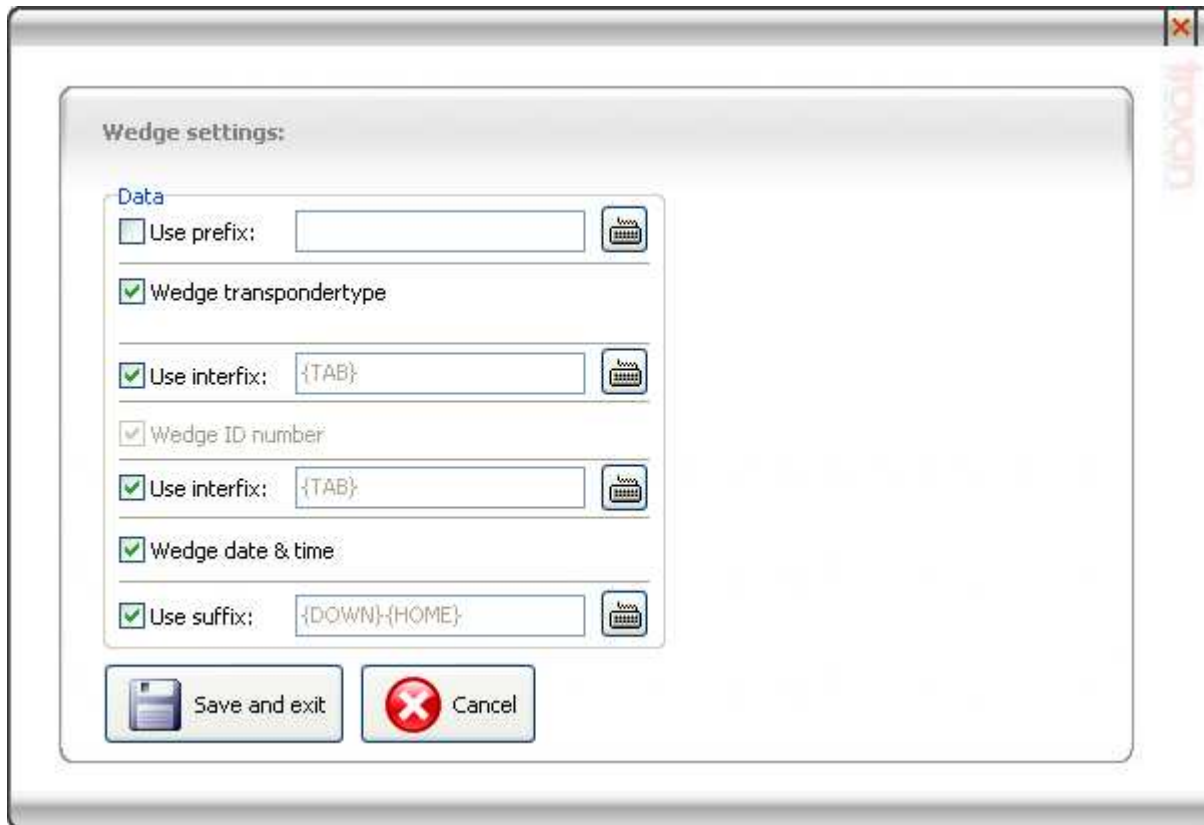
the "Action on receive ID" box (see picture), an extra button will appear: 



In order to let the wedge function work, you need to activate the "Send ID after read" option. So go to the "Reader settings" tabsheet and make sure this option is enabled (see the red box in the picture). Click [here](#) to read more about the "Send ID" function.



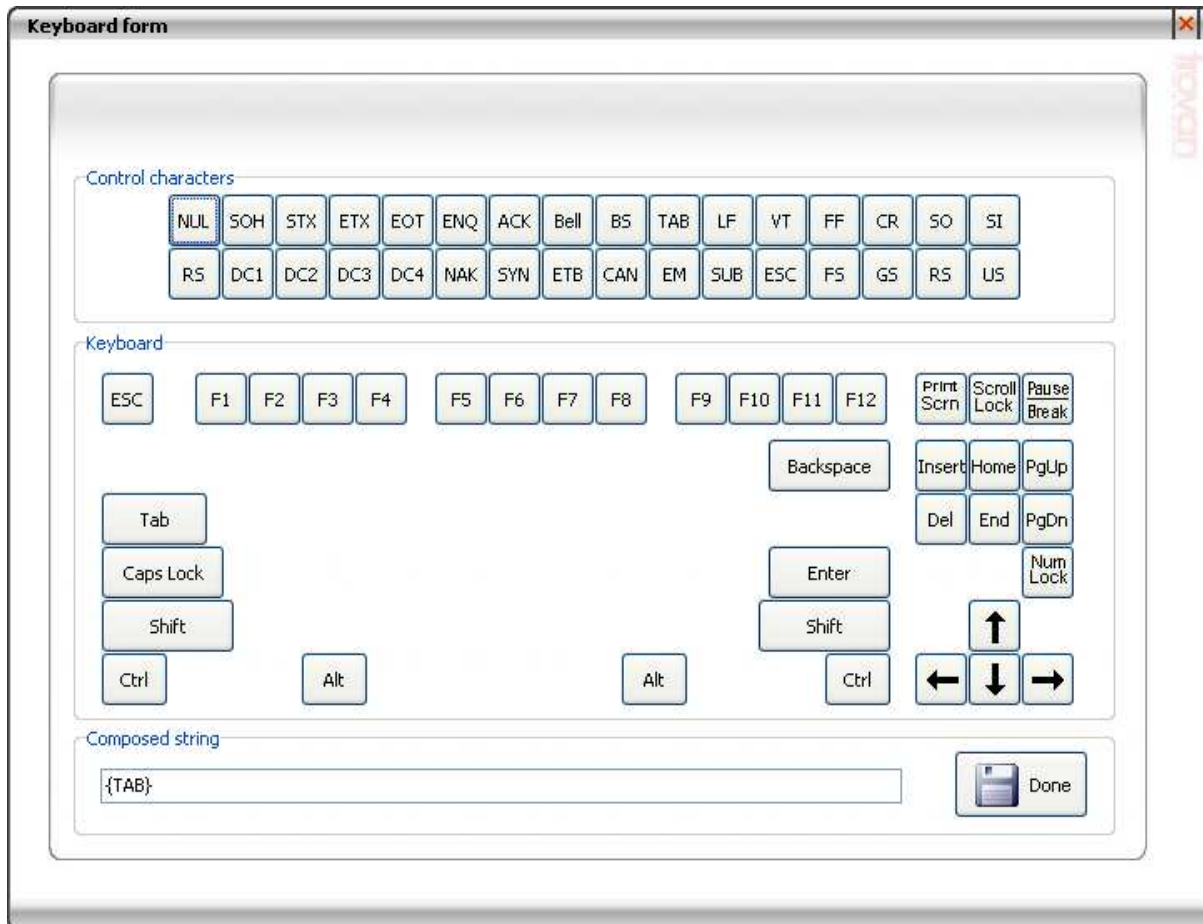
Now we are ready to set up the wedge function itself. Click on the  button on the Software settings tabsheet, the following window will be displayed:



Click on the items in the screen shot for more specific information on every item.

Prefix, interfix and suffix

If you want to use a prefix, interfix or a suffix you have to check the corresponding checkbox. You can compose a prefix, interfix or suffix string by clicking the keyboard button next to the box, a keyboard will appear:



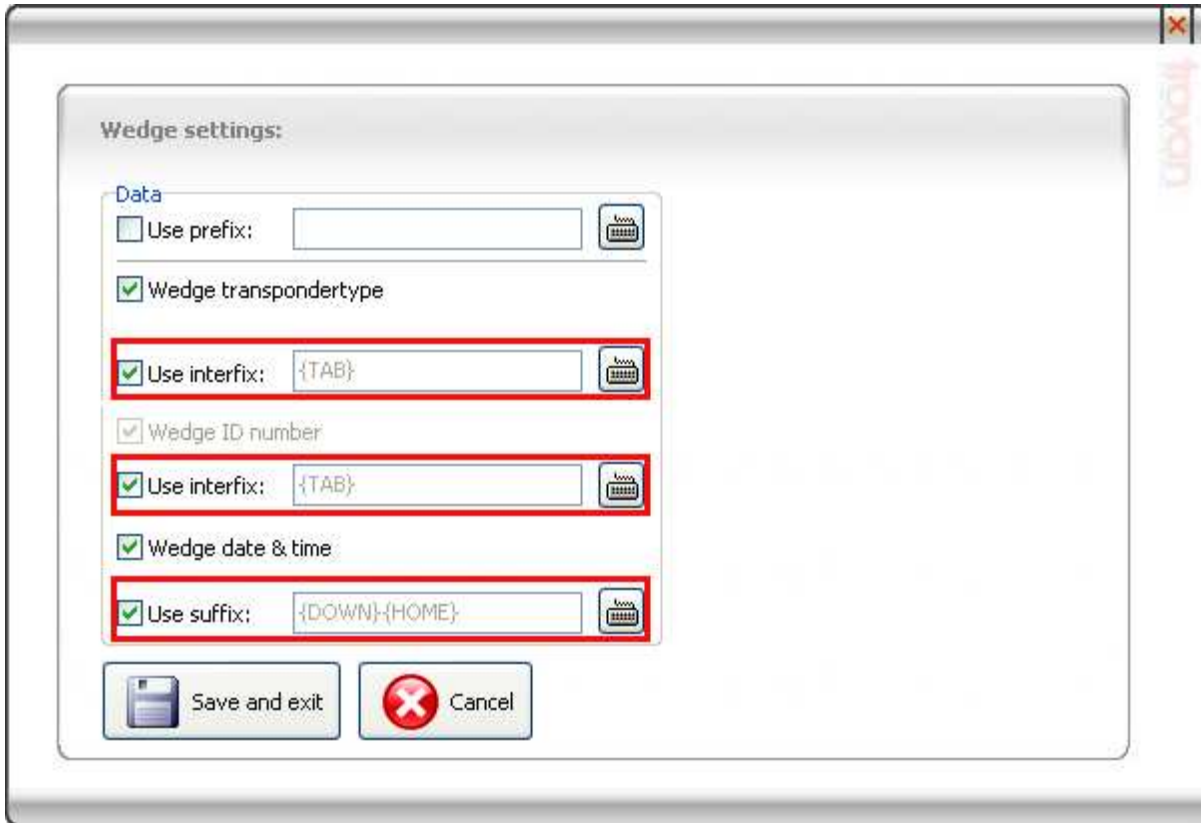
Here you can click on the different buttons, just like it were the real keys on a keyboard. You will see that, if you click the "Tab" button, the edit box at the bottom of the screen will contain "{TAB}". You will not find any letters or numbers on this keyboard because you can type these letters or numbers directly into the same box on the bottom of the screen.

In our example we want to wedge the ID number into an Microsoft Excel worksheet together with the date and time.

So we need to wedge the transpondertype, ID number and date/time.

In order to put the different data into different cells in Excel, we need to add interfixes.

To jump to another cell in Excel we normally press the "TAB" key, so if we put a "TAB" as an interfix between the transponder type and ID code, the ID code will be wedged into the next cell. We need to do the same between the ID number and the date/time information. After the date/time is wedged, we must jump to the next line, so we wedge an "arrow down" key and the "home key" so that the first cell of the next line is focussed. When done click "Save and exit".



Now select the first cell in an Excel worksheet, scan a tag and send it to the PC. You can see the result in the next picture:

	A	B	C
1	Trovan Unique:	00007DE2D9	5-10-2005;11:54:42
2			
3			

Data

The following items can be wedged:

- 1: Transpondertype; if you want to wedge the transpondertype then check this box.
- 2: ID number; this will always be wedged.
- 3: Date&Time; if you want to wedge the date & time, then select this box (date and time format will be copied from the windows regional settings).

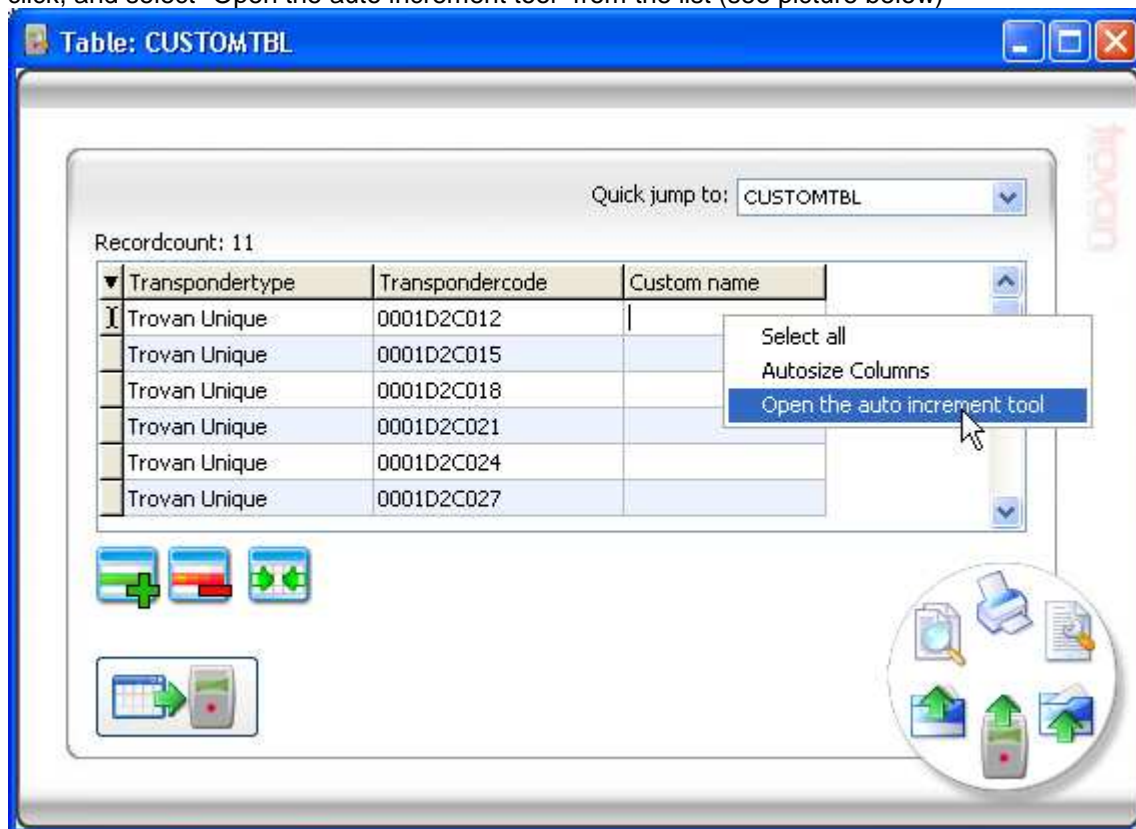
Auto increment tool

The auto increment tool is a powerful tool to fill cells with incremental data. This function is suited for two types of fields at the moment, text fields and integer/floating point fields.

Auto increment tool example

Example: If you want to fill the custom table names with incremental data, proceed as follows:

- Select a cell in the column you want to fill with data.
- Optional: select the records you want to fill, you can select the records by moving the mouse to the left of the table (cursor will change into a hand point)
- Right click, and select "Open the auto increment tool" from the list (see picture below)



- The following window will show:

Auto increment for: Text

Increment properties

Add text: Part

Start value: 5

Increment value: 3

Fixed length at: 2

Example: Part05

Auto increment:

from current record

from first record

Number of records: 4

Here you can define the incremental data, you see two boxes;

Increment properties: define the data itself, an example is shown at the bottom of this box.

Auto increment: define the starting record for the increment and the number of records you want to fill.

Note: if you have made a selection of records, this box will also contain the option "selected records"

- Click on the confirm button when done. For the result see the picture below:

Table: CUSTOMTBL

Quick jump to: CUSTOMTBL

Recordcount: 11

Transpondertype	Transpondercode	Custom name
Trovan Unique	0001D2C012	Part05
Trovan Unique	0001D2C015	Part08
Trovan Unique	0001D2C018	Part11
Trovan Unique	0001D2C021	Part14
Trovan Unique	0001D2C024	
Trovan Unique	0001D2C027	

Import TXT into Excel

On the Microsoft website you can find a detailed example on how to import a TXT file into excel. Click on the following link to go to the training site:

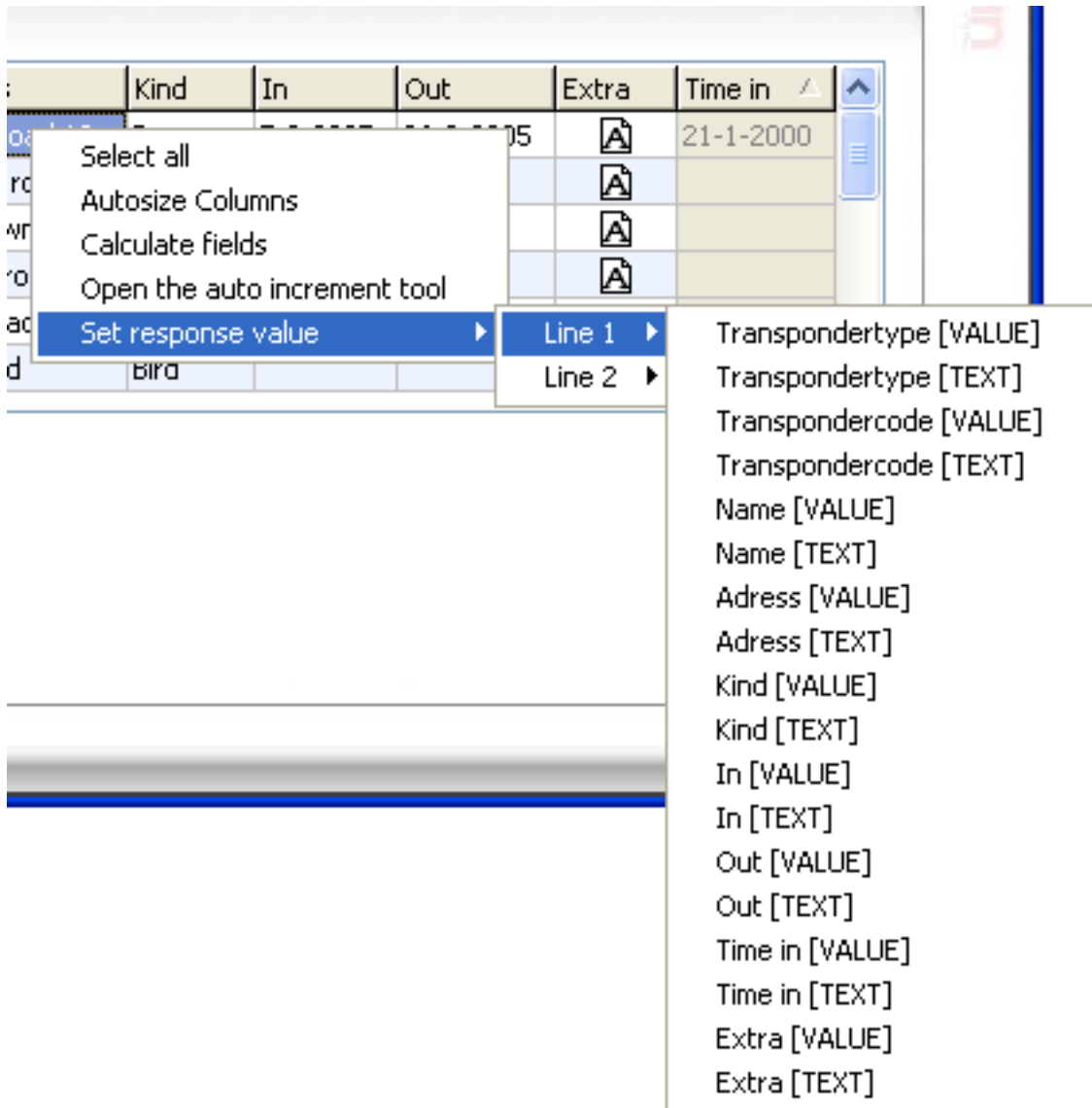
<http://office.microsoft.com/training/Training.aspx?AssetID=RC011801181033&CTT=6&Origin=RC011801181033>

Response tool

The response tool is a powerful tool if you connect a LID572 using a wireless module such as a Bluetooth module. The tool can send back data to the LCD of the LID572/575 once it receives a code from the reader. A few conditions have to be met:

- The reader must have the [Send ID after read](#) option enabled
- The [Action on receive ID](#) must be "Locate record in table"
- A table with data must be opened
- A response value has to be set

The response value can be set by right clicking the table:



Now you can choose what kind of text and / or value you want to be displayed once a transponder is read and send to the PC.

Lets say you want to display the address on the LCD, set line 1 to "Address [Text]" and line 2 to "Address [VALUE]". Once a transponder is read, you will see for example:

```
Address
Rodeo road 3
```

If you would like the name of the animal on the first line, set line 1 to "Name [VALUE]" and the next time you read a transponder you will see:

```
Fluffy
Rodeo road 3
```

The values that are set will be saved together with the table, so you can set different responses for different tables.

